



GRUMETI
FUND

FACING THE FUTURE

IMPACT REPORT 2021



Table Of Contents

- 2. GENERAL MANAGER MESSAGE
- 4. ANTI-POACHING AND LAW ENFORCEMENT
- 8. RESEARCH AND MONITORING
- 14. CONSERVATION MANAGEMENT
- 18. COMMUNITY OUTREACH
- 24. RELATIONSHIPS
- 25. SAFARIS WITH A PURPOSE
- 28. PARTNERS
- 30. DONORS
- 32. FINANCIALS

The success of the Grumeti Fund will ensure that the long-term ecological function of the Serengeti ecosystem is maintained and protected, whilst presenting new livelihood opportunities to local communities through the development of a functioning nature-based tourism economy.



Matt Perry

General Manager - Conservation & Anti-Poaching

The Serengeti, an iconic natural landscape which conjures up images of vast, open grasslands supporting millions of both resident and migrating wildlife, accompanied by a rich and diverse socio-cultural community. It is an area rich in biodiversity and remains one of a few intact, fully functioning savannah ecosystems and is therefore one of national and global importance and must be preserved for future generations. It is why the Grumeti Fund partnered with the Tanzanian Government in 2003, to help support Government's efforts in protecting the ecosystem by actively carrying out wildlife conservation and community development work in the western corridor of the Serengeti.

Maintaining this delicate balance of co-existence between humans and wildlife is a key focus area and we acknowledge that threats to derail this balance remain varied and ever present. Thus, maintaining optimism is a value the Grumeti Fund has embraced, supported by a culture of innovative thinking and empowerment. To address the challenges, requires an adaptive management approach, one guided by principles of good governance, research, innovation and technology. The Grumeti Fund continues to learn, grow and improve strategies and management behavior and is how we nourish our purpose and mission, keeping it current and in tune with ecosystem and community needs.

In 2021, the global coronavirus pandemic continued to disrupt our normal way of life. However, it inspired a team attitude to one of unity, reflection and resilience. This outlook was used as a springboard to generate further operational success and achievement. Despite complexities, this organization continued with duties to help serve the people and wildlife of this great landscape and is indeed a hallmark of the quality capacity, dedication and passion existing within the Grumeti Fund team.

We remain steadfast in our commitment during these unprecedented times. Our anti-poaching teams continued to confront threats from poaching and other forms of illegal activity. The conservation management teams addressed needs to restore and maintain ecological integrity through the successful implementation of programs including the control of invasive alien plants and fire management. Another successful Serengeti Girls Run was hosted for a fourth-consecutive year, supporting our girls and woman's empowerment initiatives within our neighboring communities. Grumeti Fund also delivered on several collaborative infrastructure improvement projects including the completion of the Directorate of Public Prosecutions building in Mugumu which will strengthen judicial capacity and will serve the Serengeti District for many years to come.

Partners and collaborations make a difference, and we are thankful to the Tanzanian Government, especially the Tanzania Wildlife Management Authority (TAWA), and to all our partnerships which have contributed to our success. Furthermore, progression would not be possible without the support of generous donors and supporters. This enabling function allows the Grumeti Fund to deliver sustainable impact through its conservation and community engagements and we are sincerely grateful - thank you for your ongoing support. Tuko Pamoja! (Swahili for "we are together").

Lastly, our planet is under threat now more than ever from severe climate change, with rapid losses in biodiversity being recorded. Media outlets are full of stories which speak of hopelessness and despair. Yet, amongst this space of gloom exists another of comfort. It is our hope that the impact report provides that comfort and offers inspiration to all who read it. Sometimes we don't need to look too far to find impactful stories - we hope you approve of ours!



Noel Mbise

General Manager - Research & Community

Matt and I are delighted that as 2021 ends, our team has a lot to be grateful about and much to hope for in the year ahead. Despite challenging times, our team members maintained an enviable level of passion, ingenuity, and hard work as they have done for years, which I believe is the proverbial secret sauce to the impactful work we highlight in this Impact Report. While that is impressive, it really is just part of the Grumeti Fund story. The other critical part of this story is no doubt our exceptionally kind and generous donors, to whom we are truly indebted. In this regard, I would like to echo my colleague Matt's vote of thanks to all our donors for helping conserve the Serengeti Ecosystem through your direct financial donations, and in-kind contributions to the Grumeti Fund.

Without your generous giving we would not have achieved so much across the Fund and in the neighboring villages, not least in a year fraught with challenges like Covid-19, and several others. The only way we can attempt to return this favor, and which we promise, is by working hard and evermore creatively to deliver the desired impact in the causes you have contributed to. Our appreciation also goes to our Governmental, institutional, and community partners as well as our local and international affiliates whose unstinting support and goodwill enable our operations. This stakeholder support forms the bedrock upon which the Grumeti Fund continues to invest substantial amounts of resources, talent, and effort to enhance success and impact in our flagship conservation and community outreach programs.

2021 saw us finalize RISE – our eco-themed, state-of-the-art facility for promoting applied research, solution oriented conservation innovations, and upskilling and training for Tanzanian conservation professionals including prospective and early career women conservationists.

We continued our ecological monitoring, stakeholder engagements, and supported socioeconomic development endeavors in Bunda and Serengeti Districts through educational scholarships, environmental education, community empowerment, rural enterprise training and business incubation programs. Through Grumeti Fund's sponsored graduate teaching fellows, we helped enhance teaching of science, mathematics, and English language in 18 adjacent primary schools, an intervention that is already proving quite impactful. More over, our dedicated, rapid response Human Wildlife Conflict mitigation unit worked with stakeholders and villagers to proactively reduce extent and the degree of loss due to crop raiding by elephants.

I hope you find the highlights provided in this report both informative and inspiring, but also thought provoking for we are by no means claiming that we have arrived and are no longer facing any challenges. Landscape level environmental degradation, less predictable weather patterns, illegal access, heavy and unsustainable reliance on direct exploitation of nature for a living, and higher levels of poverty in rural areas, as well as inadequate resources for long term programs are just some of these challenges. This sounds a clarion call to collaborative action because thriving livelihoods and ecological sustainability will be hard to attain while these challenges remain.

As we look ahead, we do so with great confidence that this incredible collective – of donor generosity, hard work, innovation, and reliable stakeholder support sets this iconic conservation project for more and greater positive impact for the people in adjacent communities, as well as the well-being of wildlife, and the nation of Tanzania for years.

ANTI-POACHING AND LAW
ENFORCEMENT

19
Poached animals recovered

3568.2
Kilograms of bushmeat recovered

1251
Snares removed

52
Number of scouts who received training
and police firearm clearance

55
Patrol flights with the Husky aircraft



The Anti-Poaching and Law Enforcement department continues to be the engine for driving the Grumeti Fund's mission. The highly trained, well coordinated scout corps with efficiency enhancing technologies and effective intelligence capabilities continues to be the optimal solution to modern poaching threats. The team continues to stay ahead of the curve, staying alert to threats, learning about new technological advances and adapting where necessary.

With all the other multifaceted approaches, the department has 12 permanent scout patrol camps that are manned 24/7 by rangers. In addition, we continue to have a network of manned observation posts which provide the first line of defence against poachers.

TECHNOLOGY

Earth Ranger continues to be an invaluable resource for operations. It has undergone many improvements and feature additions since 2017, most significantly in Patrol Management. This feature has allowed us to track the distances rangers travel and identify problem areas. In the past, this could only be done via GPS. Ongoing learnings ensure that the platform evolves through development and upgrades.

INTELLIGENCE

Our informer network proved to be effective as we registered some new informants, a number of which provided reliable information. This greatly aided the increased number of arrests made this year.

Our strong collaboration with the National Task Force for Anti-poaching via our partnership with the Mara Task Coordination Group allowed us to extend the boundaries of the law outside of the protected area. We aim to increase our effectiveness further.

CANINE UNIT



The Grumeti Fund's Canine Unit was highly successful in 2021 with 17 arrests attributed to it. Furthermore, notwithstanding covid related challenges, we managed to host one of three continuation training sessions conducted by the American Society for Canine Trainers (ASCT), combined with an animal welfare course.

The unit remained in full complement of dogs and staff – with four dogs and six highly-trained handlers.



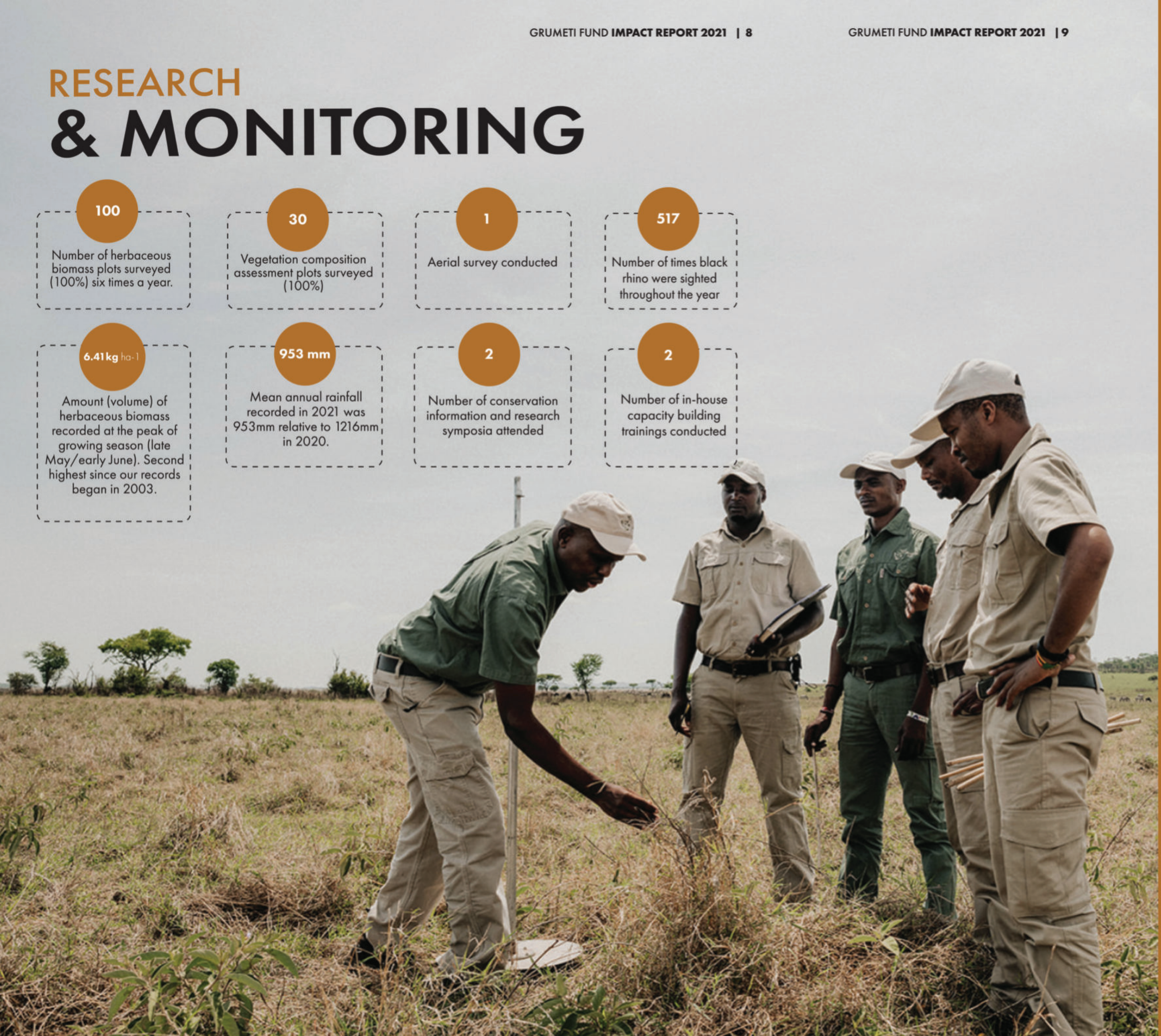
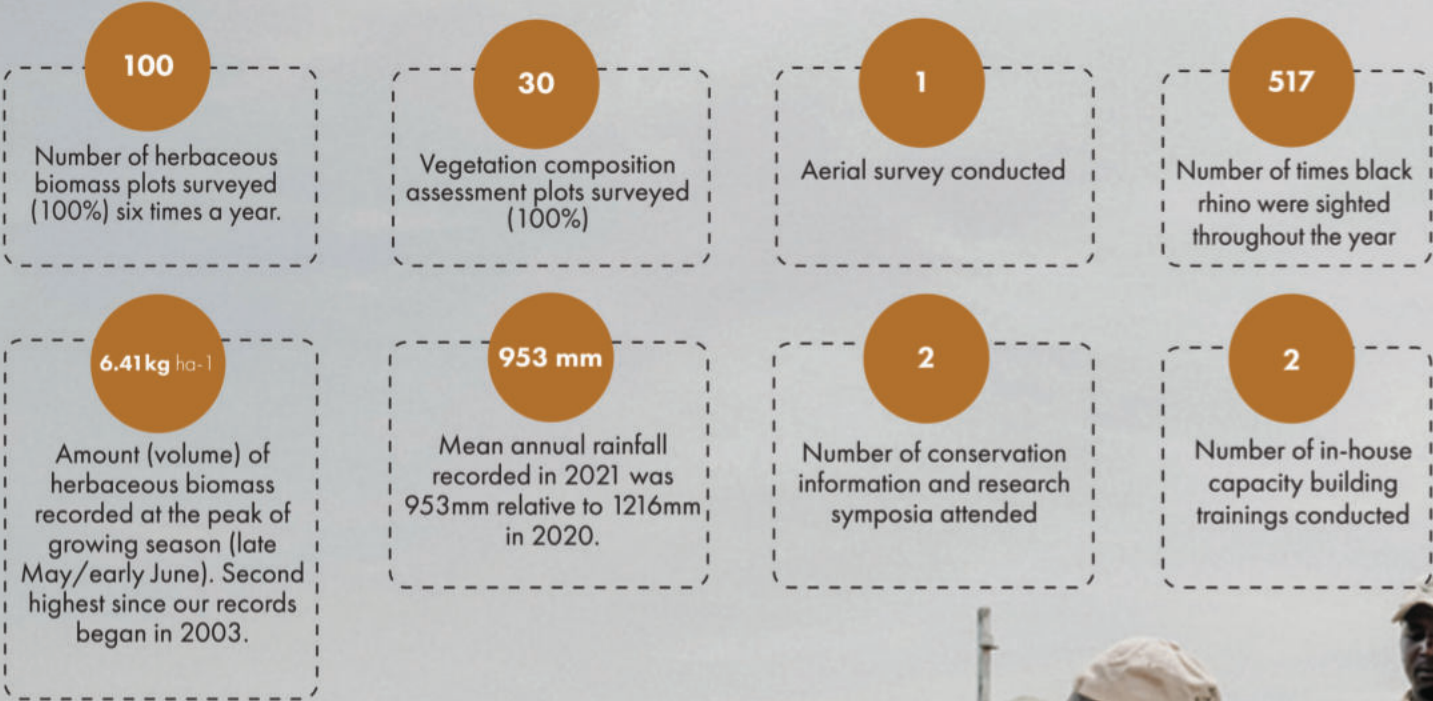
Wesley Gold
Anti-Poaching and Law Enforcement Manager

"The Anti-Poaching department is looking forward to returning our systems back to pre-COVID levels and then improving upon them with a focus on greater collaboration with TAWA, our long standing Government partner.

Additionally, we want to invest time and resources in three key areas, namely:

- Facilitating and strengthening a direct link between anti-poaching and community relations through the Grumeti Fund Enterprise development program.
- Intelligence and prosecutions, by strengthening our collaboration and support of the Tanzanian National Taskforce for Anti-Poaching as well as the National Prosecutions Service, through the North Serengeti Task Coordination Group.
- Conservation Technology through exploring and collaborating with tech developers to find optimal solutions to conservation problems."

RESEARCH & MONITORING



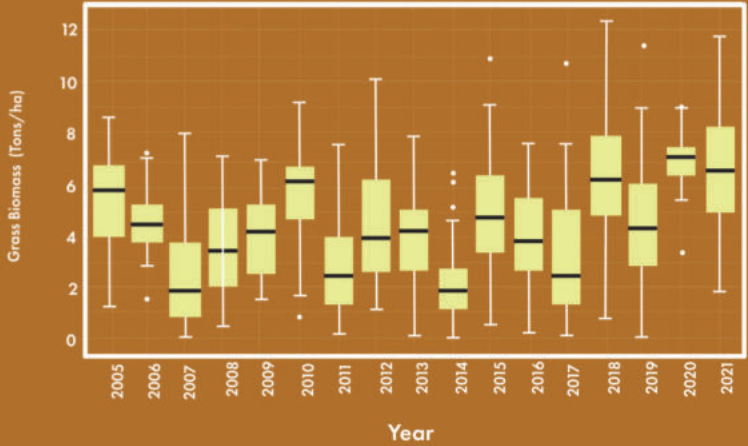
Having a good understanding of biophysical interactions among various environmental components as well as how those components respond to natural and human-induced influences, changes, or stress is a critical piece in successful and evidence guided conservation.

The Research and Monitoring Department strives to enhance this understanding through collection and analysis of important ecological data as well as disseminating the resulting information to internal users and various external stakeholders such as protected area managers, communities, conservation practitioners, and other wildlife professionals.

PLANT-BASED SURVEYS

As part of our long-term monitoring effort, the Research and Monitoring Department conducted six rounds of herbaceous biomass assessment in all the 100 survey plots distributed across the concession. Mid-year, we also conducted the annual vegetation composition assessment (VCA) and managed to survey all the 30 plots set strategically across the concession.

These assessments focus on grass and forb species and are important for understanding the amount of fodder available for resident and migratory herbivores, planning of fire management, understanding carbon sequestration dynamics, and timely identification of any red flags on biomass volumes or species composition – spatially, and over time.

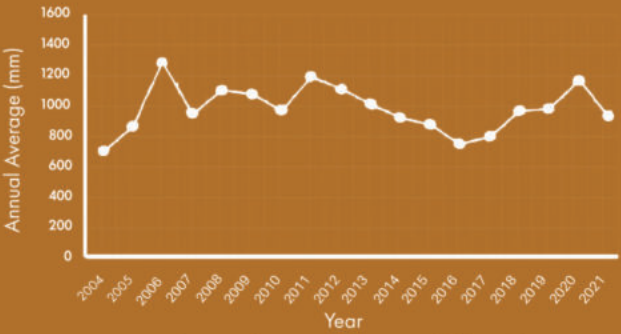


Trend in aboveground herbaceous biomass between 2005 and 2021 in Grumeti and Ikorongo Game Reserves and associated limited-use areas.

BLACK RHINO MONITORING

The Research and Monitoring Department worked jointly with our Tanzania Wildlife Management Authority (TAWA) partners to monitor black rhino in Ikorongo and surrounding areas. Successful monitoring is critical for collecting important data on biological parameters and rhino habitat condition as well as informing other management plans and decisions.

Collaboration with our TAWA colleagues significantly enhanced our success in this regard. The joint effort was also greatly supported by Serengeti National Park Management, TAWIRI and other key stakeholders. About 571 rhino sightings were made throughout the year – an equivalent of three sightings every two days, a commendable achievement considering how challenging field and other conditions can be during the wet seasons.



Grumeti long term mean rainfall trends

FAUNA MONITORING

The Research and Monitoring Department conducted our biennial multi-species riparian survey in late July. This year’s effort was the sixth survey since the first one in 2012 and was conducted aerially using a helicopter. It entails flying low along major rivers and streams in Grumeti. The aim of the survey is to document distribution and abundance of large birds nesting sites and wildlife species that mostly prefer or roost in riverine zones. The survey results suggest notable declines in riparian zone vegetation cover – a concerning trend the Grumeti Management is engaging other stakeholders on for further investigation to collaboratively devise and implement suitable remedial interventions.

During this survey, we took advantage of the opportunity and recorded abundance of, and where infestations of invasive alien plants occur. This information will guide Conservation Management plans and decisions on removal work as well as assessment of control effectiveness.

DATA ANALYSIS AND RESEARCH

Further, the Department produced various map products based on data collected from our flora and fauna surveys as well as weather and fire monitoring.

In terms of research, our team participated in and supported new and ongoing research work on Human Wildlife Conflict Control, boundary management and vulture breeding success among others.

ZAITUNI, THE ORPHANED RHINO

The black rhino orphan Zaituni (Olive in Swahili) continues to grow from strength to strength. Having been orphaned at 4-months old, Zaituni turned 2 in the second half of 2021 and her rehabilitation process has been nothing short of remarkable, thanks in large part to her dedicated team of caretakers. This effort to save and rewild this young, critically endangered animal has been due to the successful partnership between the Grumeti Fund and the Tanzanian Government. We continue to nurture her recovery program in order to hopefully one day release her back into the wild, returning to her natural environment.





Dr. Kristen Denninger Snyder
Head Scientist

"As we face the impacts of climate change, biodiversity loss, and an expanding human footprint, the need for empowered and passionate environmental leaders with the skills and fortitude to develop practical and sustainable solutions has never been more paramount. This dual need for solutions and future leaders is at the very core of our mission at RISE. By continuing to support and develop the brightest young minds in Tanzania, investing in women, and creating tangible connections between scientists and practitioners, we are preparing to meet the challenges of a rapidly changing world head-on. In the next three years we will extend our impact even further by doubling our program offerings and graduate student fellowship opportunities, goals that will only be made possible via the generosity of donors and collaborators that share in this vision."

"Conservation work requires inclusion to bring about long lasting solutions to the many challenges that both terrestrial and marine ecosystems are facing. I firmly believe that having a diversity of ideas and experience when it comes to decision making is one step towards making a meaningful impact. Women being a part of these discussions is especially important as they bring new perspectives, more specifically because they are particularly vulnerable to the effects of environmental changes. Women are an integral part of bringing about change and should be able to contribute and participate in conservation initiatives at all levels."

Victoria Mkessa
RISE Coordinator

RISE

RESEARCH & INNOVATION
FOR THE SERENGETI ECOSYSTEM



WOMEN IN SCIENCE

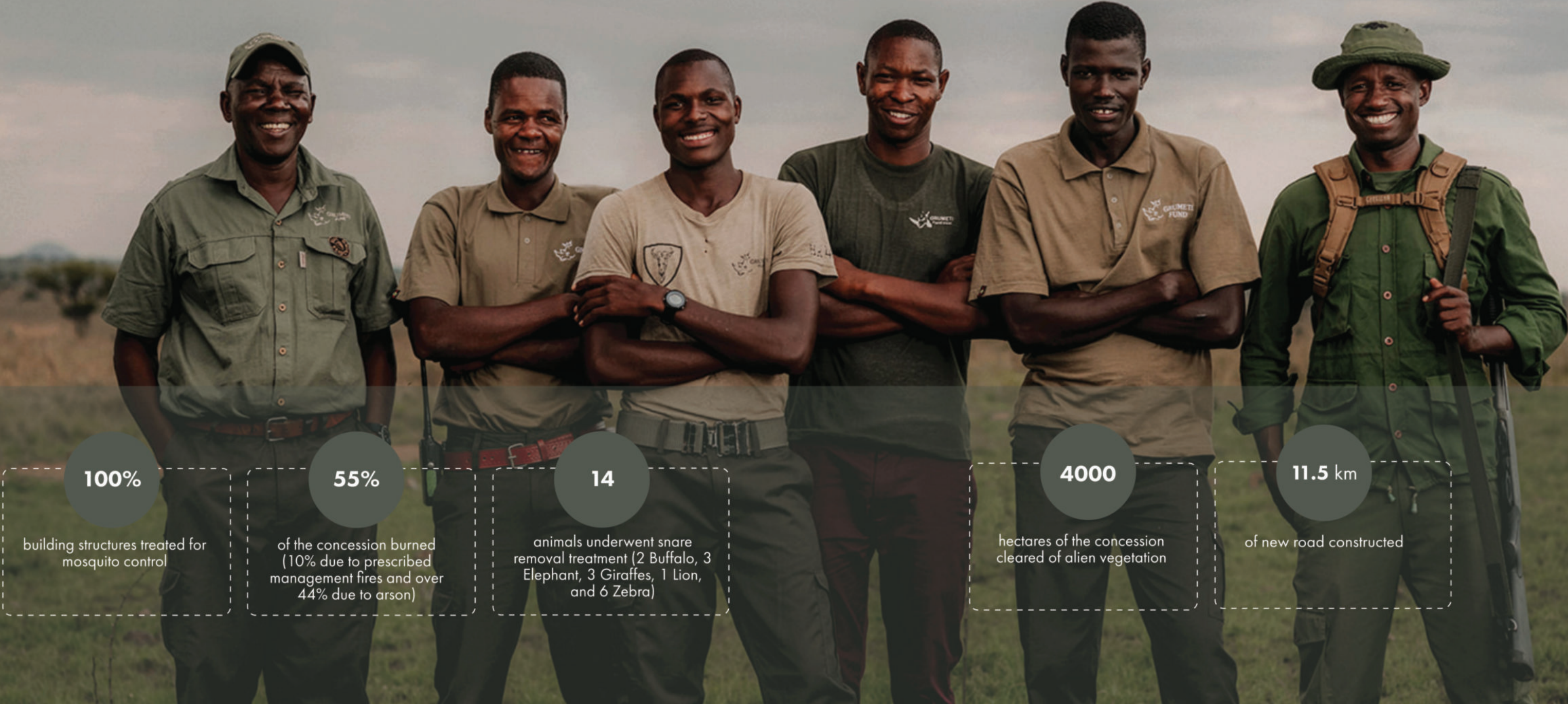
Providing Tanzanian graduate students with financial and supervisory support is one of our most important objectives at RISE. In graduate school, students are able to further develop their capabilities for designing and undertaking research, deploying projects in the field, data analysis, and scientific communication. Graduate level training is often an important career stepping stone, and students will go on to work in varying capacities in the conservation and research sectors, throughout Tanzania. Supporting graduate students is one mechanism by which we can contribute to the development of passionate early-career conservation scientists, while extending our impact to wherever students find themselves in their future work, far beyond the Serengeti ecosystem.

The graduate students we support undertake research in the Serengeti ecosystem related to top management priorities – the outcomes of their research have clear applications for our work at Grumeti Fund and for our governmental partners. Vainess Laizer was a participant in the inaugural Women in the Field cohort in 2019, and with Grumeti Fund support is nearing completion of her MSc in Wildlife Management at Sokoine University of Agriculture. In collaboration with the North Carolina Zoo, Vai is investigating the factors contributing to white-backed vulture nesting success and habitat availability in the western Serengeti, an important breeding area for this critically endangered species. Vai says that her research "will help conservation authorities determine how best to ensure that white-backed vulture populations are protected and how to manage the special sites where these vultures breed".

"Throughout my MSc, I have developed and improved my abilities in field data collection techniques. This work has also boosted my confidence in working as part of a team and with individuals from multiple organizations. I've learned how to balance the logistics of field work with other commitments, like course work and analysis deadlines. I have documented some surprising trends and novel vulture behaviors in the field - this fellowship by Grumeti Fund is a dream come true for me!"

- Vainess Laizer

CONSERVATION MANAGEMENT



The Conservation Management Department restores and maintains the habitat in which wildlife flourishes in the 350,000 acres we have been entrusted with.

The Department plays a very important role in ensuring the ecosystem is healthy. Managing both controlled and arson fires, clearing invasive plants, as well as taking care of critically endangered black rhino and helping snared or wounded wildlife ensures that the teams are kept extremely busy.

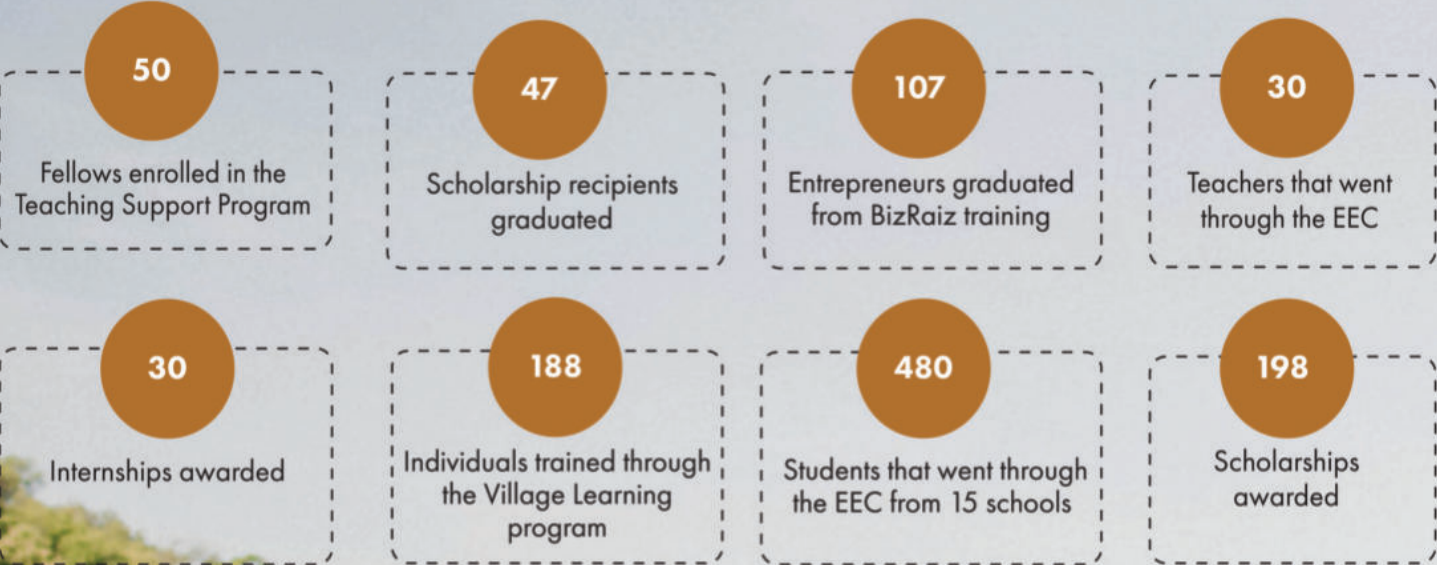
The team also welcomed Nick Bester, who returned from a hiatus to the Grumeti Fund to take over the Conservation Management portfolio and provide support to the Special Projects Department.



Nick Bester
Conservation Manager

"We remain hopeful that the future will be fruitful and we can involve ourselves in exciting projects to better the lives of the communities surrounding us and contribute further to the East African Black Rhino population in the IGGR and Greater Serengeti Ecosystem. We remain engaged with our government partners striving to better our environment and assist wildlife injured by human cause. Meanwhile it is business as usual with the two main Conservation Management programs namely fire management and invasive alien plant control. It has become very evident that the scale of the invasive alien plant problem is growing exponentially on our boundaries and the knock on effect of infestation in the protected area is daunting. To the casual observer this is a largely unnoticed issue. In the near future it will require an urgent upscaling of control measures to prevent the problem slipping away from us. The Conservation Management Department is investing in its future leaders' development and higher education to empower them to take the fight forward. Some of the old guard will be departing to study to further their careers and new talent is being developed".

COMMUNITY OUTREACH



The Community Outreach Program focuses on four main areas of change, namely: educational advancement for youth through training and scholarships, sustainable livelihoods by creating income generating opportunities, promoting good environmental stewardship, and finally, empowering women and girls.

GIRL’S EMPOWERMENT THROUGH BOYS

Girl’s empowerment through boys is a new initiative piloted by Grumeti Fund in 2021. It addresses inequality through a holistic approach that empowers girls by discussing topics that are seldom spoken about, as well and educates boys about traditions and cultural practices that perpetuate inequality.

Both male and female role models, as well as motivational speakers are invited by Grumeti Fund to different schools in the area to educate students about gender equality in a way that is not exclusive to any one gender.

In the villages surrounding the Grumeti concession, men and boys are still viewed as the main bread-winners, and dominant. As such, it is imperative that boys take on a greater role in addressing inequality, as they have a critical role to play in fostering gender equality within their communities.

In these villages, it is common for girls to be married off before or just after they reach puberty. This practice not only deprives them of their childhoods but also puts them at risk for physical harm namely, forced sex and marital rape. Boys who understand the importance of gender equality will foster change for these behaviours to cease in their communities. By providing boys with this education, we hope to reduce the numbers of forced marriages, physical harm and other behaviours that affect girls.

By the end of the sessions participating boys understand that they are not just leaders in their families, but also in their communities. And that they must take on leadership roles within their communities in order to challenge harmful social norms and practices and share with others their new beliefs in gender equality.

We are so glad that 2021 was another great success in this regard. We held 6 empowerment events, hosted 3632 girls from 14 schools, and 620 boys from 3 different schools, all from Serengeti and Bunda Districts.



ENVIRONMENTAL EDUCATION CENTRE

The Environmental Education Center (EEC) operates on the same academic schedule as all Tanzanian secondary schools. With the added tool of having tablets available to the students, it was exciting to see how students soaked up the never ending supply of educational materials.

The EEC was able to function at full capacity, hosting 480 students and 30 teachers from 15 different schools. All the schools were able to implement conservation related activities in their schools, a popular activity implemented was waste management.

2021 hit a milestone with 3 schools graduating from the EEC program, allowing new schools to register in 2022.

TEACHING SUPPORT

In the surrounding communities of the Grumeti concession, understaffing has plagued schools for years. The teaching support program is geared towards improving the quality of education by placing recently graduated teachers in schools to assist with staffing shortages. Our teaching support fellows must possess a first degree and demonstrable ability to teach in their respective fields of specialization. The focus is primarily to support the teaching of English, Science, and Mathematics. The impact of the program has been very impressive, there has been an overall increase in the students academic performance and increased classroom attendance.

Since the commencement of the teaching support program in February of 2021, 50 teachers and 2 coaches have helped in 18 primary schools serving 13,588 students.

ENTERPRISE DEVELOPMENT

Grumeti Fund is committed to working with the local communities surrounding the concession to create income generating opportunities through the Enterprise Development Program.

Since its inception, the Enterprise Development Program has been successful in training upwards of 900 entrepreneurs through its Village Learning and Guiding Programs.

The Village Learning program focuses on a hands-on approach to instil entrepreneurial thinking and building relationships with the local entrepreneurs, where the Guiding program focuses on intensive, one-on-one business support.

Village Learning

Village Learning continues to be both socially and economically impactful.

The key foundational session this year was to ensure all enrolled entrepreneurs understand the importance of having savings and record keeping.

The graduates from the Village Learning Program also enrolled in sessions that created a platform for them to brainstorm and share their experiences together as entrepreneurs.

Village Guiding Program

The Village Guiding Program was a resounding success.

We had 14 entrepreneurs, who were guided by 2 project officers, Philip Simel and Pamela Selasini.

Despite ongoing Covid restrictions, we are pleased to report all 14 entrepreneurs achieved tremendous milestones in their respective businesses, created jobs in their communities and now have some financial freedom.



Frida Mollel
Community Manager

“Reflecting the future is always blurry and uncertain, with focus and determination we are able to face the future with energy and vigour. Capitalising in what we do, the approaches, the partnership with the community and other stakeholders make it a dream come true. Ensuring the community has diversified livelihoods, quality education to youth, women empowerment, and promoting environmental conservation awareness are our tools in facing the future we aspire for.”

A BEEKEEPING SUCCESS STORY

The Beekeeping Project is a unique mix of an inclusive approach to counteract the effects of poverty and sustainable development in the face of climate change. The project tackles extreme poverty, unemployment, and environmental degradation by turning the traditional beekeeping practices into sustainable businesses and creating employment for other community members.

James Bwatondi of Nyichoka village is one of our three guiding entrepreneurs and successes of the beekeeping project. What started out as a mere hobby for James soon became a potential source of income when he realised the economic benefits beekeeping holds. Soon after this revelation, he registered for the Grumeti Fund RED project in which he was taught the necessary skills to turn his hobby into a profitable business. Today, James is planning on increasing his honey production to meet local market demands.



RELATIONSHIPS

79

Thermal scanners donated to surrounding villages health facilities

1,239

Masks donated to surrounding the villages health facilities

3,209

Litres of sanitizer donated to surrounding village health facilities

158

Educational awareness meetings on Covid-19

229

Crop raiding incidents responded to by our HWC Mitigation Unit

2,522

Villagers who attended Grumeti Fund's conservation awareness movie night shows in 8 villages

5

Friendship soccer games organized by Grumeti Fund (attracting over 2,300 spectators)

Partnerships are critical to achieving the Grumeti Fund mission, and without them, very little would have been possible. The Relationships department serves as a bridge to the government, local partners, communities, and other conservation organisations.

As part of this critical bridge-building endeavor, we engaged our neighbouring communities in communal meetings and via awareness movie night shows, soccer games, traditional dance events, and educational site visits. In the midst of the Covid-19 challenge, Grumeti Fund reached out and supported communities with various preventative supplies and worked on aggressive awareness raising in collaboration with local government authorities and health departments.



David Mwakipesile
Relationship Manager

"The Relationships Department is entrusted to act as the bridge between the stakeholders and the Grumeti Fund and our future relies on a strong, harmonious bond between ourselves and our key partners including Government and local communities. We see a future with true practice of public private partnership with more passion for both wildlife and people. We consider the Serengeti ecosystem as a true paradise and where positive coexistence is possible, and where the future of sustainable conservation considers the welfare of both people and wildlife. We believe that all the partners understand that working together ensures that we can make a difference."

SAFARIS WITH A PURPOSE

Safaris with a purpose are up-close and personal experiences that offer a way for donors to become a part of the work we do at Grumeti Fund while raising much needed funding for projects.

SERENGETI GIRLS RUN

The Grumeti fund believes that investing in girls is a critical step to breaking the cycle of poverty in local surrounding villages. We run girls empowerment events that encourage girls to have confidence to be who they dream to be.

Practices such as female genital mutilation still occur illegally, and young girls are married off for dowry, unable to finish their education. Menstruation and reproductive health are taboo subjects and access to materials can be challenging. Many girls do not go to school during their menstrual cycle, missing out on a significant portion of their studies. In the last four years, we have introduced empowerment events whereby high school girls come together to learn about career development, confidence building, menstruation, female genital mutilation, early marriage and reproductive health.

The Serengeti Girls’ Run is an event aimed at raising awareness and support for local women and girls.

2022 SAFARI WITH A PURPOSE DATES

31 October - 5 November

ELEPHANT COLLARING

This year, the Grumeti Fund collared 5 elephants (2 cows and 3 bulls) to assist in the prevention of human-wildlife conflict. The remote download GPS collars allow us to track the elephants’ movements, when alerts come through from the Operations Room that the animals are headed outside of the protected area. When the elephants register on the EarthRanger system, we are able to deploy a unit, which then moves the animals back into the protected area.

This project was initiated by the Research and Monitoring Department as a way to gather more detailed information on where and when elephants are dispersing, and to offer a proactive solution to one of the largest crises facing the immediate area, human-wildlife conflict.



PARTNERS



Tanzania Wildlife Management Authority(TAWA)

The Tanzanian Wildlife Management Authority and the Grumeti Fund work in partnership to conserve the Grumeti concessions. The co-management agreement includes decision making surrounding the wildlife and habitat of the area, and overseeing activities such as the black rhino re-establishment project, wildlife wellbeing and law enforcement.

Singita



Singita is the Grumeti Fund's sole ecotourism partner. The low-impact and exclusive tourism carried out by Singita creates opportunities for people from around the world to learn and experience the beauty of the Grumeti concessions, shining a light on conservation and community development.

African Community and Conservation Foundation(ACCF)



The African Community and Conservation Foundation is the Grumeti Fund's fundraising partner in the United States. The organization operates a 501(c)(3) non-profit through which all US-based Grumeti Fund donors can make tax-deductible donations.

Nothing sticks in your head better than a story. Over the 350,000 acres of the Grumeti concession that we have been entrusted to conserve, there are thousands of stories to be told.

The Communications Department inspires change by making these stories vivid and sharing the local communities' experiences for the achievement of conservation goals and the benefit for communities alike.

I believe we are achieving our mission and vision one story at a time. People and wildlife can and will live together sustainably.

Bhoke Mtatiro - Mgeni
Head of Communication & Fundraising



Thank you

The Grumeti Fund depends on the generosity of donors to help us carry out our conservation and community programs. Your gift has helped enhance the ongoing protection of this crucial part of the Serengeti ecosystem and provide much needed support to the development aspirations of neighbouring communities. A big thank you to all the Grumeti Fund donors that made 2021 a huge success.

STAY UP TO DATE

Information on the Grumeti Fund can be found on the website: www.grumetifund.org or through social media @grumetifund.

DONORS

PLATINUM DONOR
\$100,000+

Paul T. Jones, II
Brendan Thomas Kennedy
Aqualia International Foundation
VGP Foundation

SILVER DONOR
UP TO \$9,999

A Heslop
Adam Grutz
Adam Shapiro
Adrian Kaplan
Ainslie Foundation
Alex Wiebusch
Alex Zbyski
Alexandra Demong
Amber Clark
Amy Pasquariello
Ana Moreland
Andrea Falcioni
Andrew Cosgarea
Anita Stemmet
Anka Martin
Ann Marie Braun
Ann Worthington
Anna Dossi
Anne Pizzacalla
Anthony Esposito
Anthony Grossi
Antonio D Wilson
Barbara Brannan
Barbara Braun
Bessie Seybold
Bill & Ann McCarthy
Bracy Maynard
Brian Tuskan
Bridgetly Valdez
Bhoke Mtatiro
Canadian Independent Micro School
/L.A.I. Taipei, Taiwan
Candice Iam
Caryn Egan
Catherine Dutton

GOLD DONOR
\$10,000 - \$99,999+

Drorit Wertheim
Peter & Dana Hopper
Christian Michael Joest
Generation Capital/PGF Family Corp
Mark and Susan Dalton

Chad & Wendi Fischer
Charles Myers
Chase Pion
Christine Lane
Christopher M Daly
Cindy Goeddel
Cushing Anderson
Cyndy Beaton
Cynthia Hallowell
Damiana Foscari
Dana Farrington
Daniel Lee
Danielle Dormand
Dave Corbin
David and Kim Dreiblatt
David Generoso
David Lewis
David Wittmann
Debbie Eager
Debi White
Debra DeMonte
Dehao Zhang
Denisse Aviles
Derek Bogdan
Diane Brierley
Donald Stimson
Douglas Marshall
Ed Goldswain
Elizabeth Michaels
Ellen Will
Emily Deddens
Esther Christoffersen
Etzer Kiss
Federica Angelucci
Fidelity Charitable Gift Fund
Fritz Eckl

Garrett Jones
Genevieve Deveaux
George Heflich
George Henninger
Gerard Beaton
Gina Dyer
Greg Fury
Hannah Shank
Hannu Liinakoski
Harjunn Sandhu
Harriet Schwartz & Geoffrey Crew
Heidi Gorle
Henley Vazquez
Holly Wingren
Ian Merrington
Jaime Hartney
James Brian Hamann
James Louie
Jana Ewer
Jane Bove
Jane Braun
Jane Mitchell
Janet Bogdan
Janet Reeves
Jason Drake
Jaycelin Welham
Jennie Nelson
Jerome Alix
Jessica Guenard-Valiquette
Jodi Westwater
Joe Wagner
John Hudson
John Thompson
Jon Dinsmore
Joost Freijzer
Joseph Deveaux

Joyce Wilcox
JP Morgan Charitable Giving Fund
Justin Lindblad
Karen Zimmer
Kate Gary Villereal
Katherine Malay
Katherine White
Katia Ambrosini
Katie Fewkes
Katy Flaherty
Kenney Johnson
Keri Forbringer
Kerry Dyer
Kevin Warsh
Kim Shrader
Kimberly D Gatof
Kimberly Knous
Koray Bulut
Kyra Bruns
Lara Evans
Laura Poovakad
Laurel Jepson
Lauren Cohen
Lauren Gonzalez
Lauren Mechler
Lauren Simmonds
Lee Ann Marienthal
Lena Thiede
Linda Parke
Lisa Polkinghorne
Lori Newby
Lorraine Bennett
Lorraine Stargel
Lou deLisser
Louise Sims
Luana Dias Gomes
Lucy William
Luz Marino
Lynne Rosevear
Madalyn Rustagi
Maggy Carney
Maija de Rijk-Uys
Marcia Jones
Margaret Reznick
Mark Drexler
Mark Preyer
Mary Majta
Mary Mallard
Mason Alberts

Matthew Ayres
Maureen Landriault
Megan Anttila
Mehmet Milhan Cizmeci
Melissa Kroskie
Melissa Pugh
Mettrie Lari
Michael Chambers
Mihai Cristolovean
Mike Anderson
Mike Behn
Miranda Shultz
Mitchell Kaneff
Nancy Kleinman
Nadine Swanepoel
Natalia Carvajal
Natalie Robillard
Nicholas Seshadri
Nick May
Oksana Shevchenko
Patrick Child
Patrick McDonald
Peter Hoffmann
Pfizer
Pim Berger
Pravin Kumar Vanchi
Priyanka Jain
Rebekka Doeringer
Renata Kukowski
Rhenea Regan
Rhonda Ceccarelli
Rhonda Vetere
Richard Crowley
Richard Engle
Richard Mastain
Richard Norris
Richard Theobald
Robert Birmingham
Robert Johnson
Robert Murphy
Ronald Walton
Rune Larsen
Ruta Patil
S. Fabrizio Zichichi
Sabine Brink
Salla Eckhardt
Samantha Chen
Scott Parker
Sean& Kath Rees-Gibbs

Sergio Pellegrini
Sevda Kleinman
Shah Kunjali
Sheila Ferguso
Sheri Frend
Shipley Salewski
Sonia Bjork
Spencer Harman
Steph Castoreno-Longstreth
Stephanie Perreault
Stephen Chamberlain
Stephens & Lindsey Johnson
Steve Mitchell
Sue Mastrandrea
Susan "Kit" Barrow
Susan Gibbs
Susan Newson
Susan Stewart
Sven Olof Lindblad
Tai-Heng Cheng
Talia Valkin
Tammy Dines
Tatiana De Angulo
Ted Akiskalos
Teri Abbott Mahoney
Theo de Rijk
Theodore Heublein
Theresa Foo
Timothy & Brooke Anderson
Tobias Herbert
Troy Haas
Ulrike Naumann
Umberta Croce
Vanessa Prestage
Vanessa Ryan
Veronique Smal
Vinayak Alias Madhav Kulkarni
Wendy Jennings
Weston Henderson
Whitney Martin
Yanira Ramirez

FINANCIALS

7%	Relationships
12%	Community Development
14%	Conservation Management
26%	Anti-Poaching
11%	Research and Monitoring
25%	Support Services and Administration
5%	Communication and Fundraising





www.grumetifund.org | info@grumetifund.org | [@grumetifund](https://www.instagram.com/grumetifund)